

KEDV's HARMONI AND ILK ADIM COLLECTION

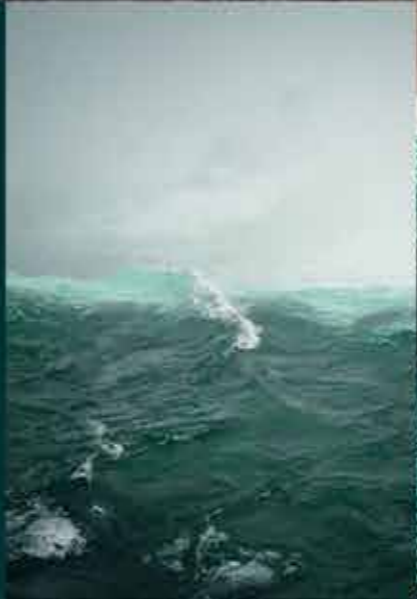
Spring 2017 Istanbul collection

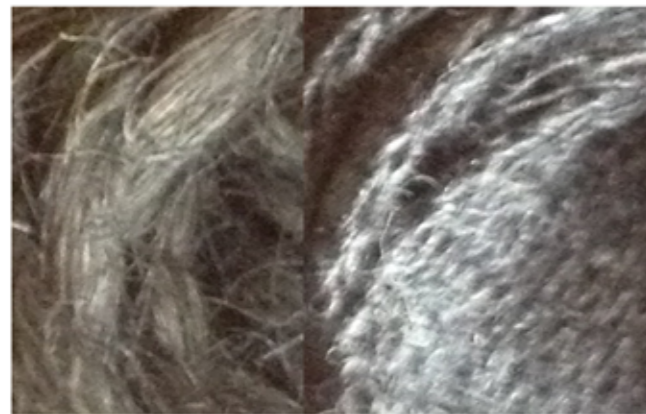
The collection centers on the beautiful skills the collectives are capable of. The designs are simple in the cuts leaving the attention to focus on the handmade work.

The bag collection involves crochet, patchwork and leather work. It tries to connect these skills in a collection that for most parts is unisex, thereby widening its appeal. It operates in natural fibers, some recycled. The colors are nature inspired in soft tones, shade in shade.

This is a luxury bag collection, where the handicraft is in focus making each bag unique.

The home accessories collection for Ilk Adim is based on the products they already have. The alterations are minor, but will hopefully add a little extra touch of quality and design.





COLOR, TEXTURE AND SAMPLE BOARD

H A R M O N I I

COMPUTER AND TABLET COVER
WITH POCKET INFRONT WITH ARTWORK'
ICAN BE ATACHED TO EACH OTHER



laptop:
33 cm/26,5cm



tablet
25cm/17cm

LIKE THE PICTURE SHOWS, THE IDEA IS THAT TEH BAGS
CAN BE ATTACHED TO EACH OTHER.
BUT THE CASE CAN ALSO BE USED AS NORMAL COVER.

THE CASE ITSELF IS MADE IN (PREFERABLY WAXED) COTTON
AND THE POCKET ON ONE SIDE IS MADE OF LAMB LEATHER
PATCHWORK.
THE PATCHWORK CAN BE LESS DETAILED THAN SHOWN.



BACK PACK

CANVAS, CORCHET FROM HEMP, LEATHER

FOLD CLOSING



measurements:
height 35 cm when folded down/50 when folded up
length: 30 cm
width 9 cm

BODY MADE OF CROCHET AND CANVAS (FRONT) AND
CANVAS (BACK) PREFERABLY WAXED CANVAS,

BOTTOM IN AND STRAPS IN LAMB LEATHER

UNISEX TOTE

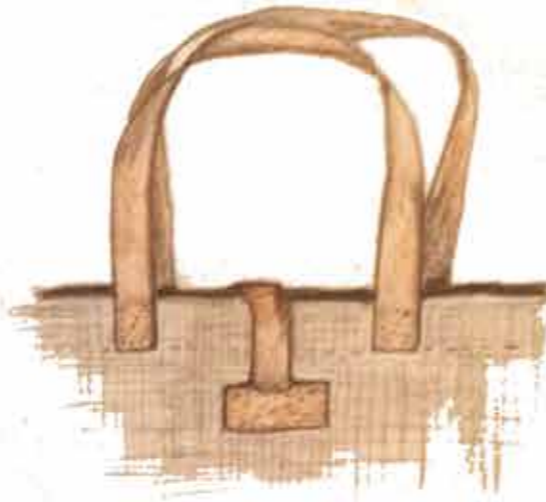
CROCHET IN HEMP OR PAPER
CANVAS (PREFERABLY WAXED)
COW LEATHER FOR STRAPS AND HANDLES
LINING BY THIN CANVAS



body is made of crochet
pocket is made of canvas

measurements:
length 39cm
height 30 cm
with: 8 cm

inside pocket with zip made in canvas



UNISEX TOILET/WASH BAG

bag body made of crochet hemp lined with canvas and plastic for water proofing
outside pocket made from canvas
bottom, strop and closer made from lamb leather.

folded up visual



compartments on one
side made with canvas
strop with elastic inside
on the other side zip
compartment from top
to bottom.



measurements: height when folded up: 30 cm, folded 20 cm. with 10 cm and lenth 19 cm

CLUTCH

CROCHET FROM HEMP OR RECYCLED PAPER AND LEATHER

FOLD-OVER CLOSING with zip



measurements

length: 35 cm

height when folded up: 28 cm

height when folded down: 20 cm

handle: with 1,5 cm and length 130 cm

CROCHET BEACH AND SHOPPER BAG

MADE IN RECYCLED COTTON AND PAPER STRING/OR HEMP

LEATHER HANDLES

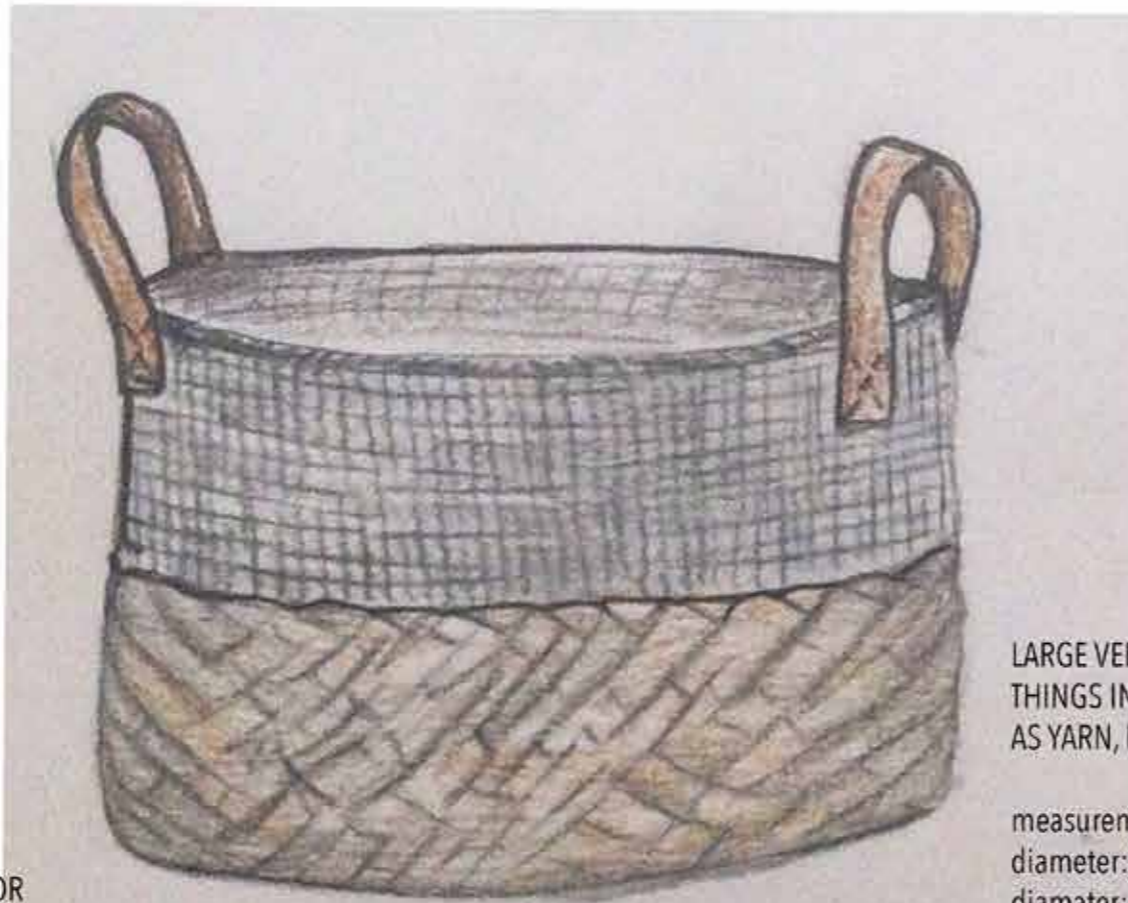
INSIDE COIN POCKET



I L K A D I M

ILK ADIM
EXISTING PRODUCT WITH ALTERATIONS

COTTON AND HEMP BASKET MADE IN CROCHET (WITH LEATHER HANDLES)

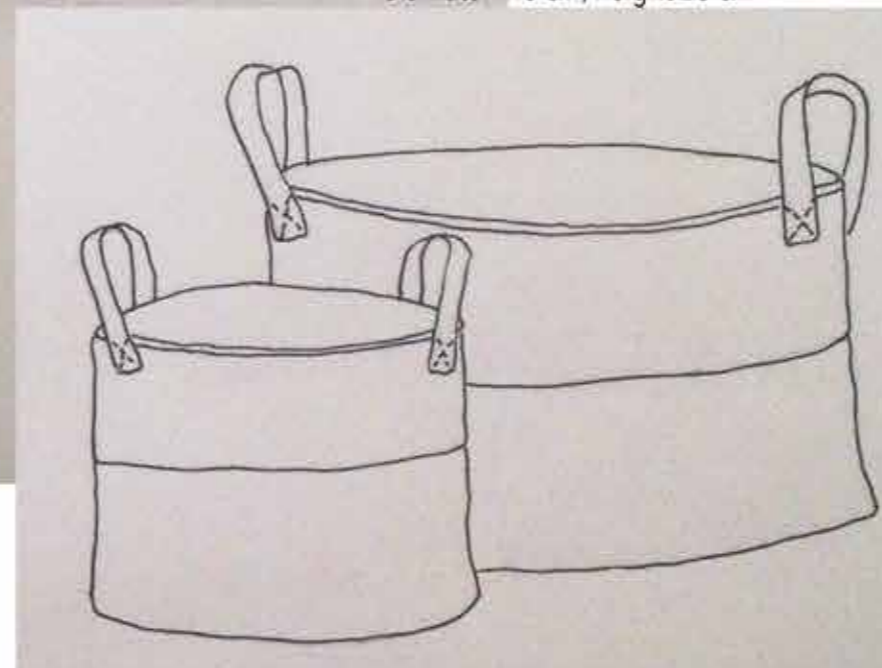
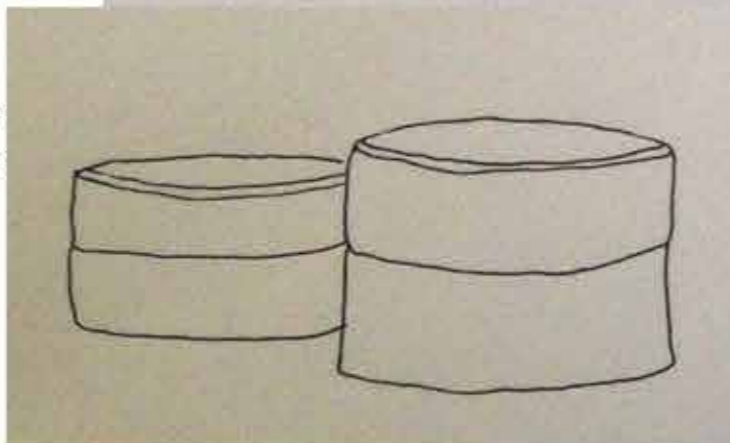


LARGE VERSION FOR STORING THINGS IN THE LIVING ROOM SUCH AS YARN, MAGAZINES OR BOARD GAMES

measurements:
diameter: 30 cm height: 20 cm
diameter: 40 cm, height 25 cm

SMALL VERSION WITHOUT HANDLES FOR BATHROOM AND BEDROOM

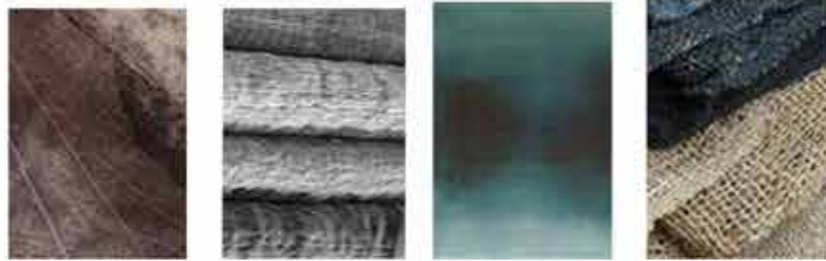
measurements:
diameter: 15 cm, height 13 cm
diameter: 18 cm height 15 cm



IDEA BOARD

ILK ADIM
CUSHION DESIGN
EXISTING PRODUCT WITH ALTERATIONS

COLOURS:
GREY SCALE
MULBERRY
NATURE
TEAL
PETROL



LEAVING AREA DENSE WITH STRIPES AND OTHER AREAS FREE AND PLAIN.

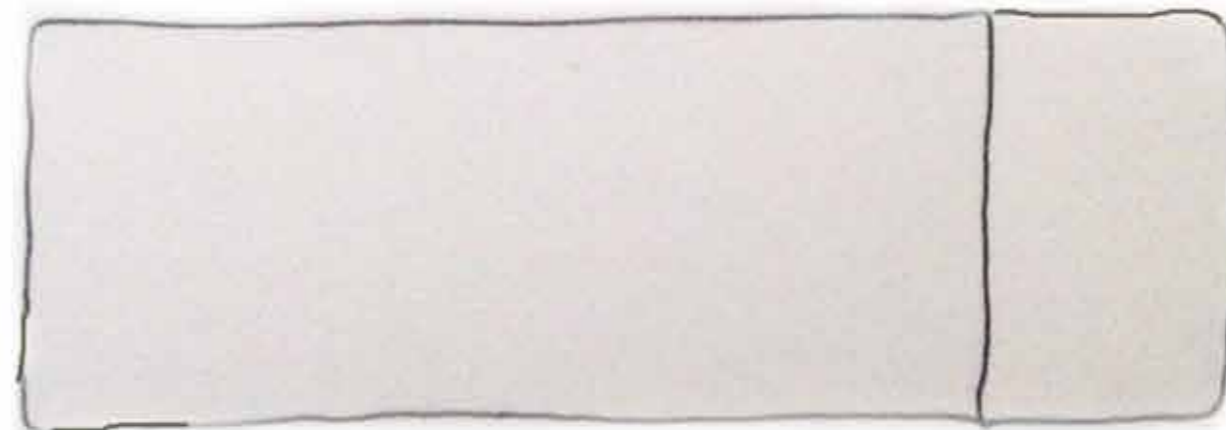
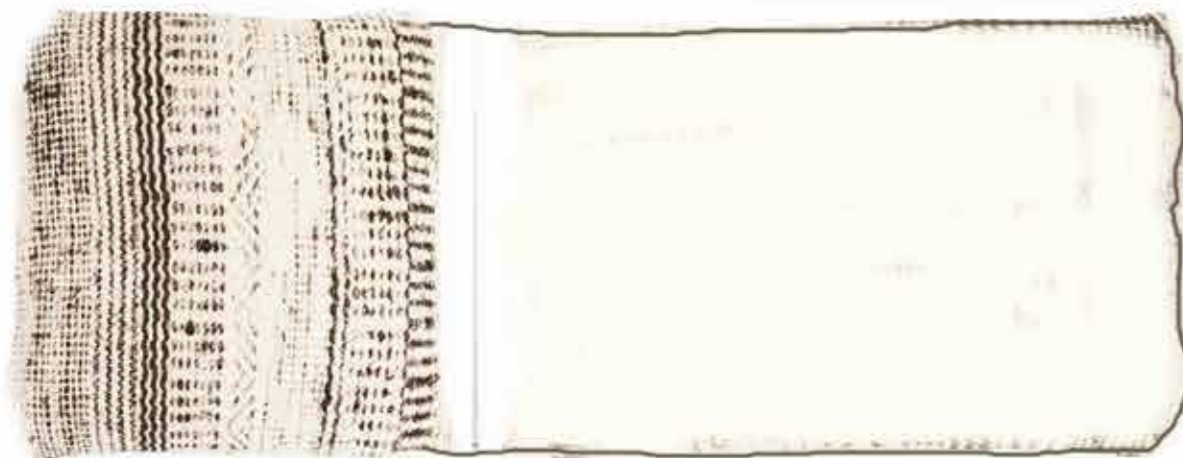
measurements:

1)
60cm/40 cm

2)
70cm/35cm



BACK IS MADE FROM CANVAS IN NATURAL
COLOR



CLOSE WITH OVER LAP